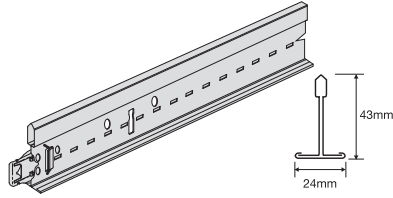


PRELUDE 24 CORROSION RESISTANT



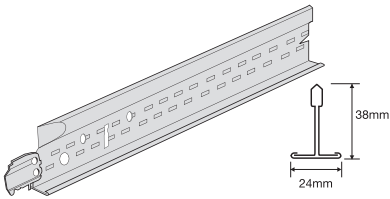
Exposed 24 mm grid system (nominal).
 Special paint finish and TLX steel-based composite clip for enhanced corrosion resistance.
 Corrosion resistance 700 hours salt spray test on grids according to EN ISO 9227 standards.
 Durability Class C (EN13964:2004 + A1:2006)

Universal Main Runners 24 Corrosive Resistant Peakform and Superlock Clip (bulb to bulb connection)



Item Nr.	Dimensions		Content / Carton		Weight / Carton	Cartons / Pallet
	length (mm)	height (mm)	pcs	lm		
28 40 42	3600	43	20	72,00	21,00	30
28 41 42	3750	43	20	75,00	21,90	30

Cross Tees TLX 24 Corrosive Resistant (Hook system, butt cut)



14 30 32	1200	38	60	72,00	18,20	72
14 31 32	1250	38	60	75,00	18,90	72
14 20 32	600	38	60	36,00	9,10	144
14 21 32	625	38	60	37,50	9,50	144

Section Drawings

Main Runner 24 Corrosive Resistant

Length	78,125	156,25	21 x 156,25	156,25	78,125
3750	50	100	33 x 100	100	50
3600					

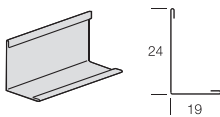
Cross Tee TLX 24 Corrosive Resistant

Length	300	300	300	300
1200				
1250	312,5	312,5	312,5	312,5

Cross Tee TLX 24 Corrosive Resistant

600/625

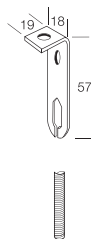
Perimeter Solution



Item Nr.	Description	Dimensions		Content / Carton		Weight / Carton
		length (mm)	height (mm)	pcs	lm	
T 1924 LB	Corrosive resistant perimeter angle	3050	24	36	109,80	27,60

Accessories - Corrosion resistance 700 hours salt spray test

For loading data please see standard versions of these items on pages 66-67.

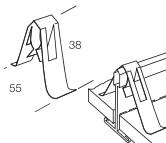


A WDNCR 20 H
Bent tee bar hanger for threaded rod

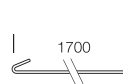
A CR1829 G
1000mm Threaded rod dia. 6 mm



A CR1827 G
Nut for threaded rod



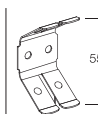
A CR7890 G
Universal retaining clip



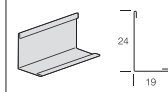
A CR627 G
1700 mm hanger with hook



A CR11 G
Small hook

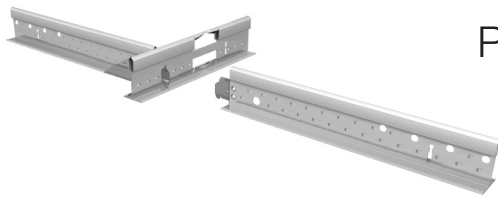


A CR12 G
Butterfly



T 1924 LB
Corrosive resistant suspension angle

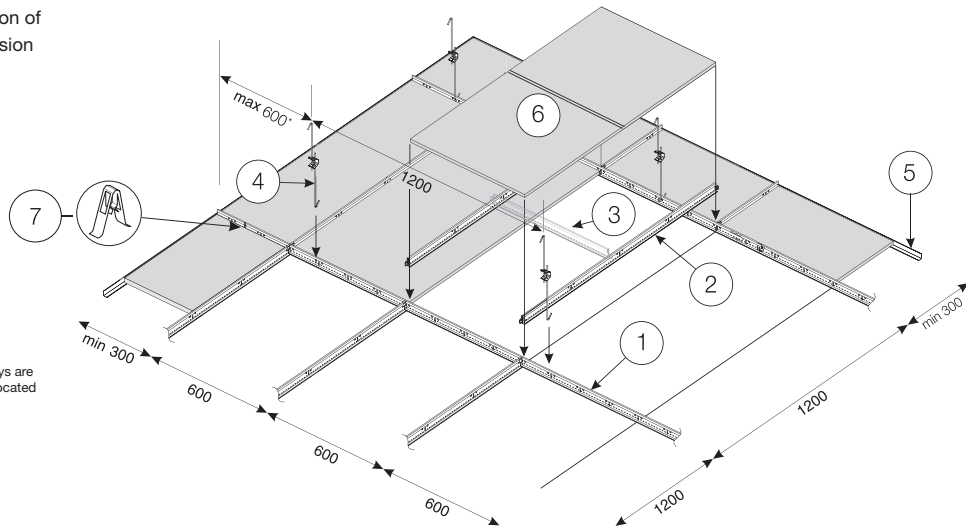
Availability of products may vary according to location.



PRELUDE 24 CORROSIVE RESISTANT

System Drawing (module 1200 x 600 mm)

Standard lay-in installation of 24 mm exposed suspension system using Board or Tegular edge tiles.



*reduce to 450 if heavy tile / overlays are used or heavy service fittings are located near the perimeter.

6 Tile	Main Runner centres	Hanger centres	Quantities required per 1m ² (no waste included)				
			1 Main Runner	2 Cross Tee 1200 mm	3 Cross Tee 600 mm	4 Hanger	7 Universal Retaining Clip
1200 x 600 mm 1,39 pcs	1200 mm	1200 mm	0,84 lm	1,67 lm	-	0,70 pcs	5,56 pcs
	600 mm	1200 mm	1,67 lm	-	0,84 lm	1,40 pcs	5,56 pcs
600 x 600 mm 2,78 pcs	1200 mm	1200 mm	0,84 lm	1,67 lm	0,84 lm	0,70 pcs	5,56 pcs
	600 mm	1200 mm	1,67 lm	-	1,67 lm	1,40 pcs	5,56 pcs

5 Perimeter Trim approx. 0,70 lm/m²

The chart is for general guidance only.

Grid Load Capacities

Prelude 24 Corrosive resistant The following table gives the maximum permitted hanger distance (mm) along the Peakform Main Runner (28 40 42) for the tile weights and Main Runner spacings noted.

Tile weight	Hanger spacing	
	Main Runner spacing 1200 mm 1200 mm Cross Tee 14 30 32	Main Runner spacing 600 mm 600 mm Cross Tee 14 20 32
2,5 kg/m ²	1900	2100
3,0 kg/m ²	1800	2100
3,5 kg/m ²	1750	2100
4,0 kg/m ²	1700	2100
5,0 kg/m ²	1600	2000
5,5 kg/m ²	1550	1950
6,0 kg/m ²	1500	1900
7,0 kg/m ²	1450	1800
8,5 kg/m ²	1300	1700
10,5 kg/m ²	1200	1600
13,0 kg/m ²	1050	1500

- Values in the above table conform to Class 1 as defined in EN 13964:2004+A1:2006 table 6. For other classes /deflection limits please contact your **local Armstrong Technical Sales**.
- Values are determined from laboratory tests methods in accordance with EN 13964:2004+A1:2006 clause 5.
- Values are applicable for 600 x 600 mm tiles assuming that the maximum deflection of the grid is L/500 but not greater than 4 mm (L = span).
- No other applied loads such as luminaires, air diffusers, smoke detectors, sprinklers, hanging signs etc. are permitted.**
- No overlays such as mineral wool or fibre glass quilts, as may be required for enhanced acoustic, fire or thermal performance, are permitted unless their full weight is established and included, together with the weight of the tile, within the appropriate weight groups.
- For grid loading data calculated to different criteria than Class 1 to EN13964:2004+A1:2006, please contact your local **Armstrong Technical Sales team**

Availability of products may vary according to location. Please contact our **Armstrong Technical Sales** for further details.

CENTRAL EUROPE NORTH (DK/EE/FIN/IS/LT/LV/N/PL/S)
 Armstrong Building Products B.V.
 Sp. z o.o. Oddział w Polsce
 Ul. Domaniewska 37
 02-672 Warszawa
 Poland
Tel. : (+48) 22 337 86 10 / 86 11
 Fax : (+48) 22 337 86 12
 e-mail : service-ce@armstrong.com

Latvia : www.armstrong.lv
Lithuania : www.armstrong.lt
Norway : www.armstrong.no
Poland : www.armstrong.pl
Sweden : www.armstrong.se

